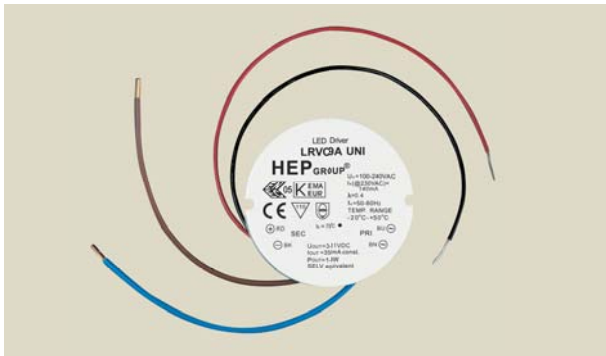


100V-240V AC



Approval Marks



Certified

EN 61347-1:2008
EN 61347-2-13:2006
EN 62384:2006

Electronic

Parameter	Conditions	Min	Nom	Max	Unit
I/P Voltage Range		90	230	264	Vac
Input Frequency		47	50-60	63	Hz
Output Power(Pout)	350mA LED	1	-	10.8	W
Input Current(Iin)	25°C,Nominal Input@230VAC	-	140	-	mA
Output Voltage(Vout)		3	-	31	Vdc
Output Current(Iout)	25°C,Nominal Input	332	350	367	mA
Power Factor	POWER FACTOR(Typical.)	-	0.40	-	
Protection	Overload Protection				
	Short Circuit Protection				
	Over Heat Protection				
Ambient Temp.		-20	-	+50	°C
Case Temp. (Tc)	Normal Conditions	-	-	+70	°C

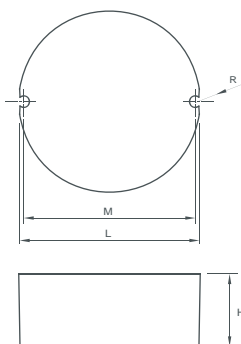
Lamp Type High Power LED 1.2W x 1~9

Application Space

Indoor/Outdoor use
(Low Humidity, No Condensation)

Physical

Parameter



L : 55 mm H : 22 mm
M : 52 mm K : mm
N : mm R : 1.7 mm
W : mm
Tolerance : $\geq 0 \sim 100 \geq \pm 0.5\text{mm}$
 $100 \geq \pm 1 \text{ mm}$

Terminal Block : Hard Wires : PRI : Blue / Brown 149mm AWG#18
SEC: Red / Black 190mm AWG#22

Housing Material : Polycarbonate / Potting
Soldering : Lead-Free, Comply With RoHS
Label : Surface Print

Wiring Diagram

